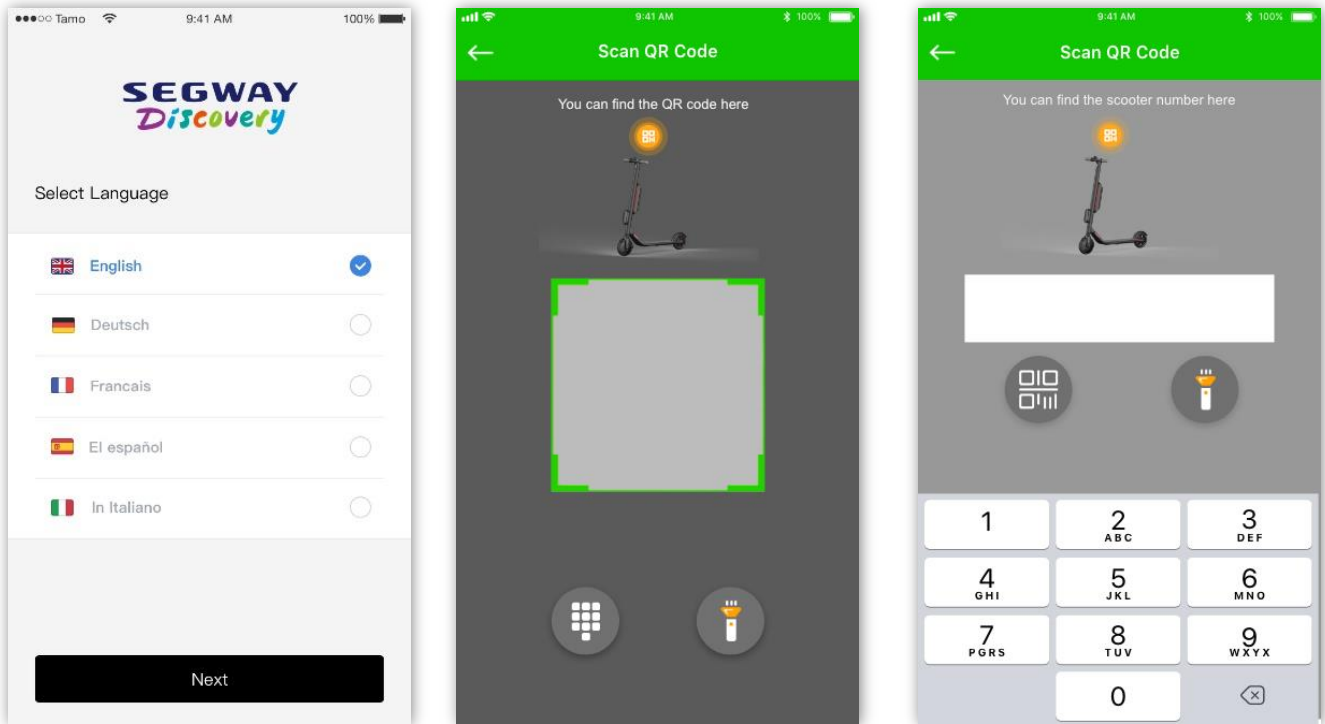


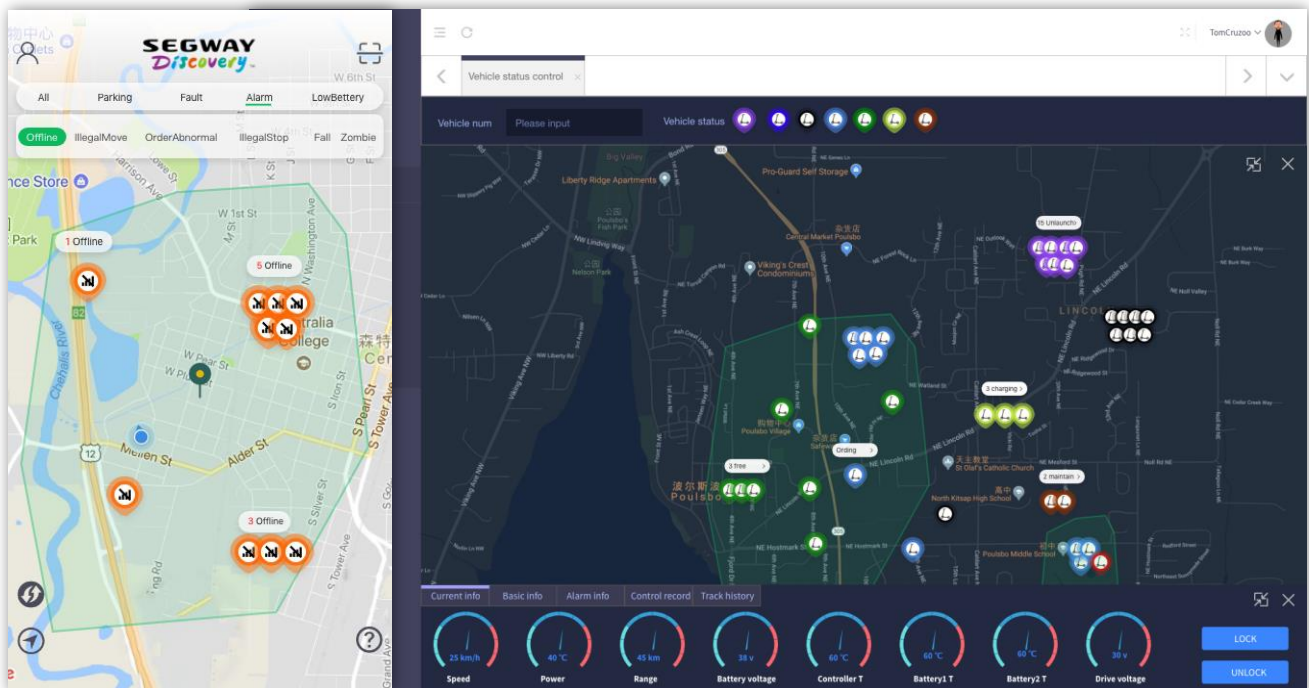
How to Use the Self-guided Scooter Tour Mobile APP

1. Scan to unlock a scooter

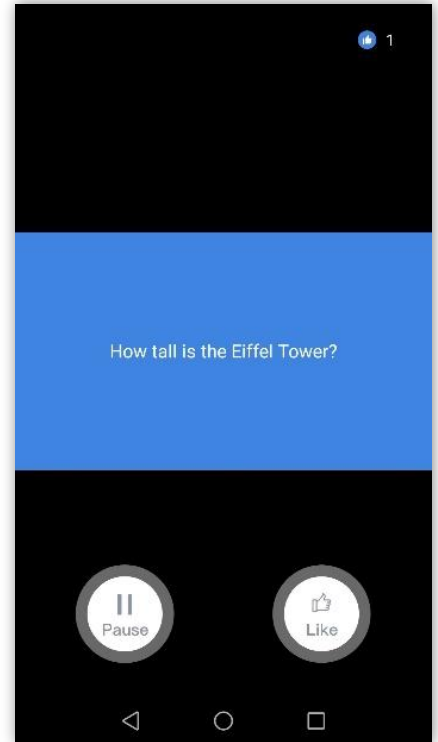
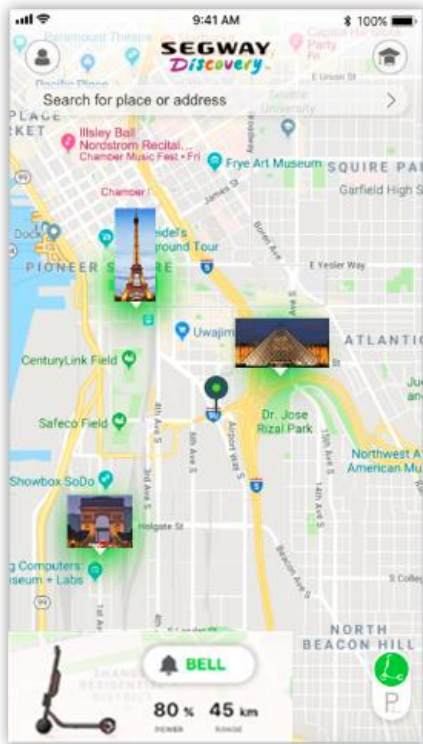
Wherever a deployed scooter is found, End User could scan to unlock it.



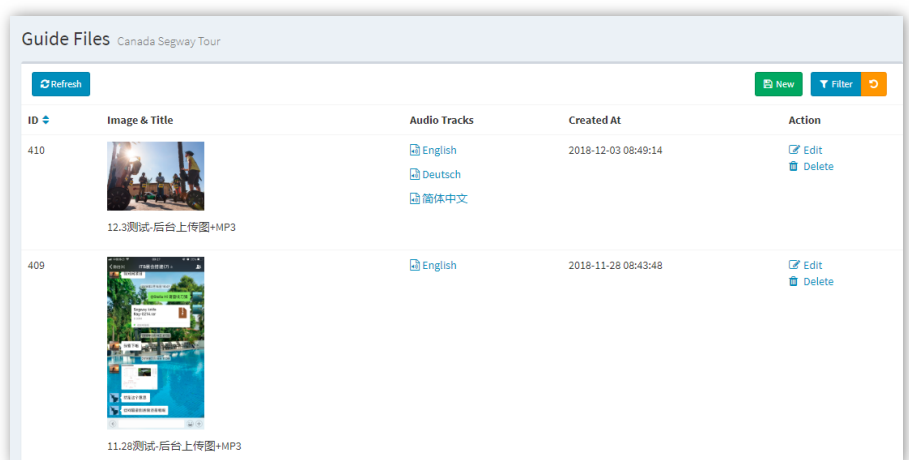
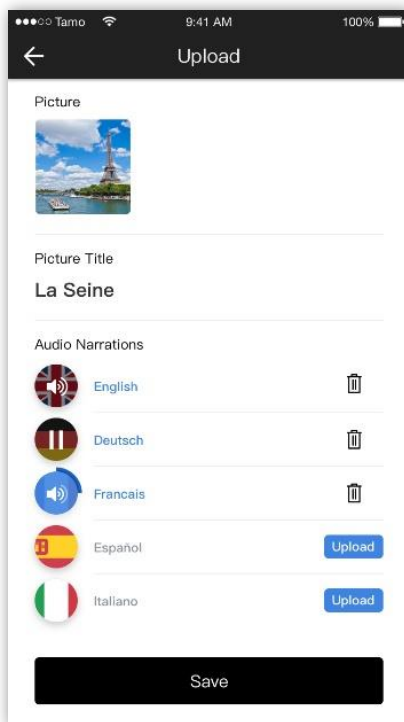
(Geo-fence: Operators can decide where to deploy their scooter fleets and set the places of return in the dashboard. Also, the guide/staff could check all the scooter conditions in their geo-fence.)



2. Ride to view spots supported with multilingual narrations



(Tour operators and their guides could do in advance: 1)create view spots or add their partners as view spots, like shops, restaurants, etc. 2)upload existing narration materials either through the mobile APP or the dashboard.)



3. Lock and Pay (People pay for using your scooter and contents.)

